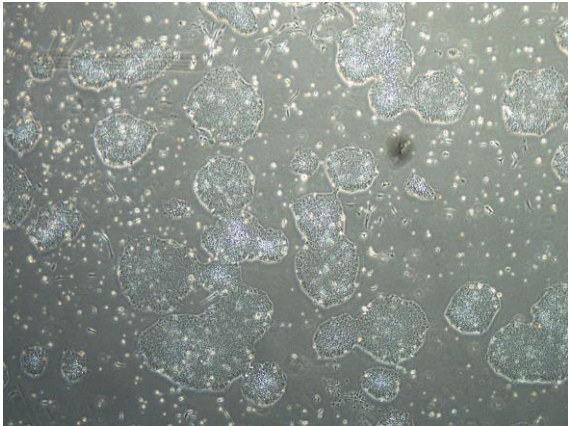
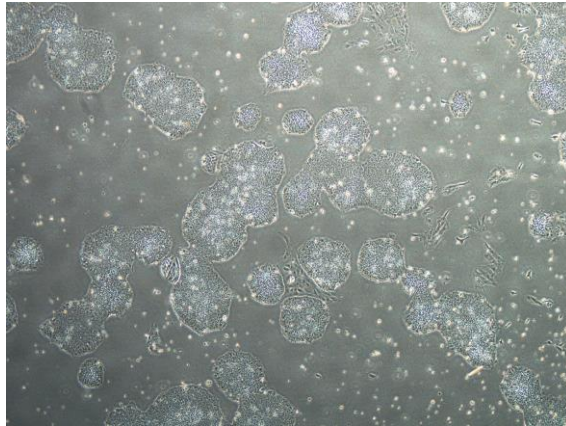


【 CiRA-j-1402 】 Morphology of iPSC colonies

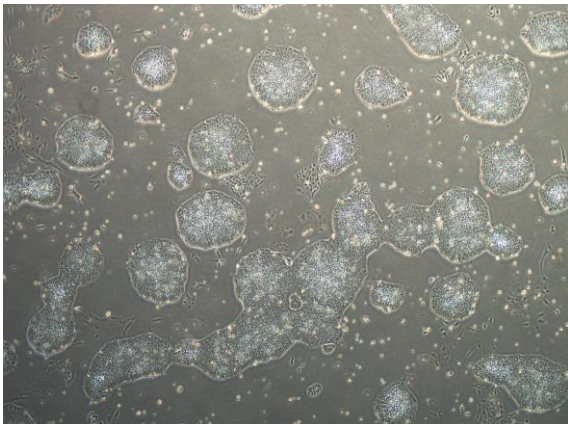
CiRA-j-1402-A: passage-3



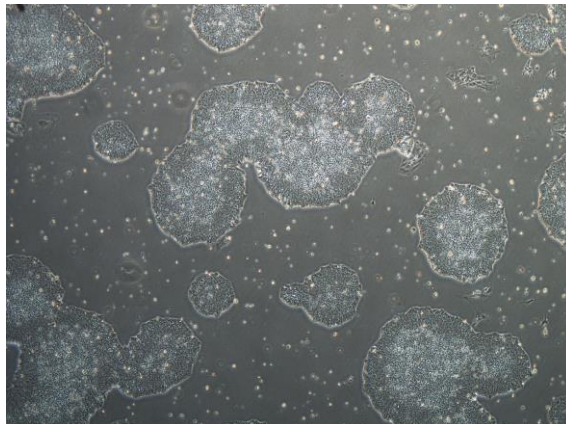
CiRA-j-1402-B: passage-3



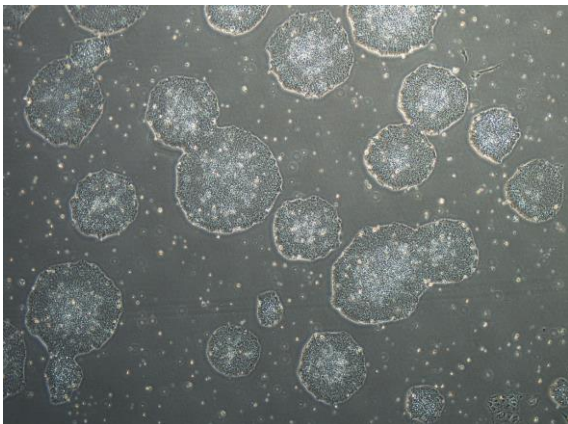
CiRA-j-1402-C: passage-3



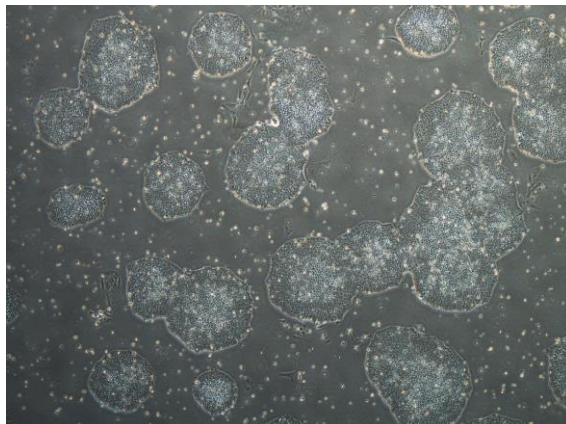
CiRA-j-1402-D: passage-3



CiRA-j-1402-E: passage-3



CiRA-j-1402-F: passage-3



(All images were captured at 4x magnification)